



Stoneacre
Properties



Third Avenue

Leeds, LS12 1LA

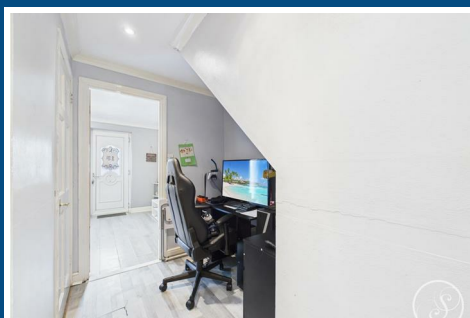
£150,000



Third Avenue

Leeds, LS12 1LA

£150,000



Entrance

Entering the property you are welcomed in to hallway which offers access to the lounge and the kitchen/diner.

Lounge

Large formal lounge with ample space for seating. Rear door and French doors lead out to the garden.

Kitchen/Diner

Spacious kitchen made up of wall and base units with integrated double oven, gas hob, space for washing machine, dryer and fridge/freezer. Space offered for a formal dining table.

Bedroom 1

Large double bedroom laid to carpet with plenty of space for bedroom furniture.

Bedroom 2

Second double bedroom.

Bedroom 3

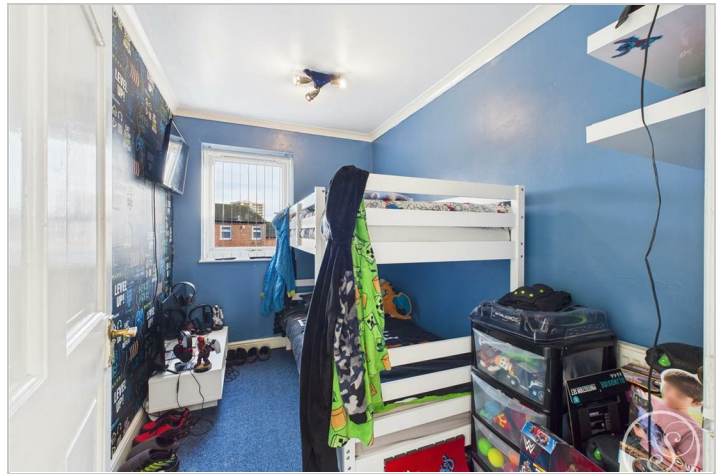
Third single bedroom.

Bathroom

Shower over bath, sink, and separate w/c.

External

Outhouse storage shed, front courtyard and rear lawned garden with raised decked area.



Road Map



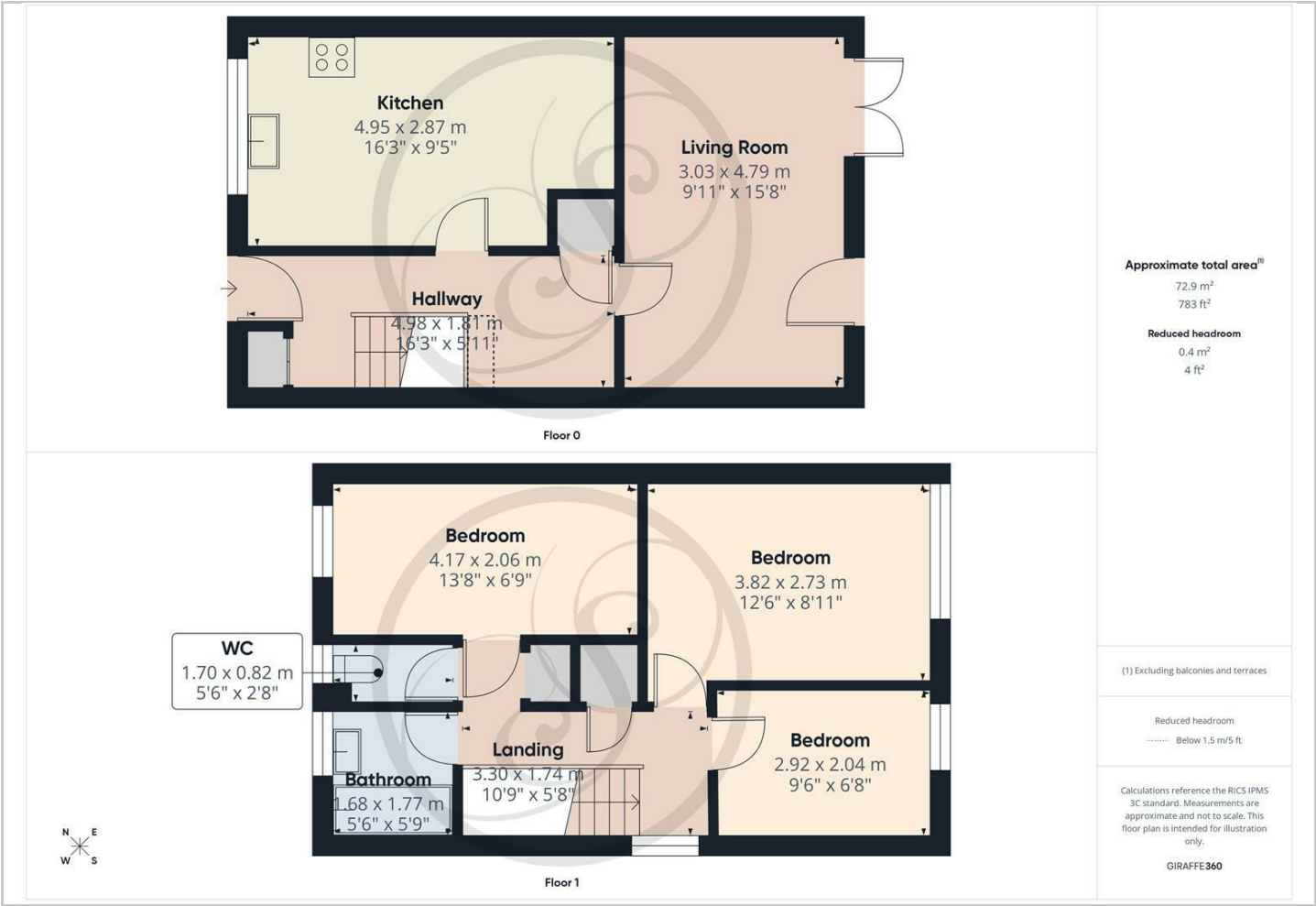
Hybrid Map



Terrain Map



Floor Plan



Viewing

Please contact our Chapel Allerton Sales Office on 0113 237 0999 if you wish to arrange a viewing appointment for this property or require further information.

Energy Efficiency Graph



These particulars, whilst believed to be accurate are set out as a general outline only for guidance and do not constitute any part of an offer or contract. Intending purchasers should not rely on them as statements of representation of fact, but must satisfy themselves by inspection or otherwise as to their accuracy. No person in this firm's employment has the authority to make or give any representation or warranty in respect of the property.